



**BOARD OF SANITARY COMMISSIONERS
ORGANIZATIONAL MEETING
10:00 a.m. January 2, 2019
Third Floor City Hall**

**CITY OF
TERRE HAUTE
BOARD OF
SANITARY COMMISSIONERS**

City Hall
17 Harding Avenue, Room 200
Terre Haute, IN 47807
Phone: 812.232.5458
Fax: 812.234.3973
www.terrehaute.IN.gov

AGENDA

1. Call to Order
2. Roll Call
3. Public Comments
4. Approve Minutes
5. Approve Claims
6. Elect Officers
7. Set Meeting Dates/Times for 2019
8. Idle Creek Lots 411 to 426 Sewer Acceptance
9. Adjournment

**Minutes of Regular Meeting of the
Board of Sanitary Commissioners
Terre Haute, IN
December 18, 2018**

A regular Meeting of the Board of Sanitary Commissioners was held in the Mayor's Conference Room on the third floor, City Hall, 17 Harding Avenue, Terre Haute, Indiana, on the 18th day of December 2018, at 10:00 a.m. Those present were Jim Winning, Chuck Ennis, Tim Adams, and Larry Auler for the Board of Sanitary Commissioners. Terry Modesitt was present. Brad Bush was not present.

Also present was Debbie Padgett and Alicia Barnard of the WWTP; Troy Swan of HWC; Bob Murray of the Taxpayers Association; and Sally Roetker, Scott Barbour, Jennifer Bolen, of the Engineering Department. Joe Seliken was present for the last portion of the meeting.

The meeting of the Board of Sanitary Commissioners was called to order by Vice President Tim Adams. There were no public comments.

APPROVE MINUTES

The minutes from the December 4, 2018 meeting were presented to the Board.

On motion of Larry Auler, seconded by Chuck Ennis and unanimously approved, it was resolved that the minutes from the December 4, 2018 meeting be approved.

APPROVE CLAIMS

The list of claims was presented to the Board for Sanitary District General and Waste Water Treatment Plant and discussed.

On motion of Jim Winning, seconded by Chuck Ennis, and unanimously approved that claims be approved as presented.

BIG IRON AUCTION AGREEMENT

Debbie Padgett presented the Board with an agreement with Big Iron Auction for disposal of the equipment that declared surplus at previous meetings. Terry Modesitt reviewed and approved the agreement.

On motion of Jim Winning, seconded by Larry Auler and unanimously approved, it was resolved that the Big Iron Auction Agreement be approved.

QR DRAIN REPORT PROJECT

Debbie Padgett presented the Board with a proposal for a website for the QR Drain Report Project. This is a new program that will be implemented. A QR Code will be put on storm drains and citizens will be able to report issues by scanning QR Code. This proposal is for development of the website that issues will be scanned to. The cost is \$5000. Alicia Barnard said that she received a \$5000 grant from IAWC that will cover this cost.

On motion of Chuck Ennis, seconded by Jim Winning, and unanimously approved, it was resolved that the QR Drain Report Project be approved.

SET TIME/DATE FOR 2019 ORGANIZATIONAL MEETING

The Board discussed the time and date for the 2019 Organizational Meeting of the Sanitary Board. It was determined that the meeting would be held on January 2nd, 2019 at 10:00 a.m.

On motion of Jim Winning and seconded by Chuck Ennis, and unanimously approved that the Organizational Meeting of the Board of Sanitary Commissioners will be held on January 2nd, 2019 at 10:00 a.m.

OTHER

-Debbie Padgett presented the Board with a proposal for continued cleaning of the IP Lagoons. The deadline for having the lagoons cleaned is 12/31/18. There is still work to be done. She plans to ask IDEM for a 2 year extension. They have requested a signed proposal. Terry Modesitt reviewed the proposal from Merrill Brothers. Debbie Padgett said there is \$1.5 million in the line for 2019 and it is estimated that there is \$2.2 to \$2.7 million required to finish.

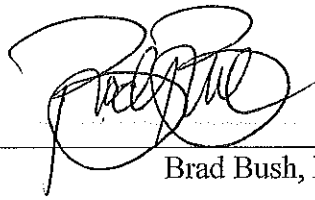
On motion of Chuck Ennis, seconded by Larry Auler, and unanimously approved, it was resolved that the proposal for cleaning of the IP Lagoon from Merrill Brother be approved.

- Troy Swan provided the Board with an update on the Phosphorous Removal Project.
- Joe Seliken informed the Board that he has an idea that would save the City between \$20 and \$30 million dollars on the LTCP and that details would be forthcoming.

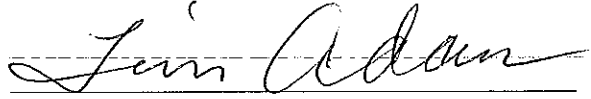
ADJOURNMENT

The Organizational Meeting of the Sanitary Board will be held on January 2nd, 2019 at 10:00 a.m. in the Mayor's Conference Room, 3rd Floor, City Hall, 17 Harding Avenue, Terre Haute, Indiana.

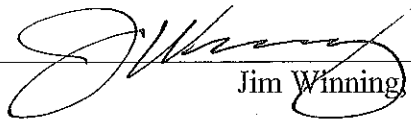
APPROVED on the 2 day of January, 2019.



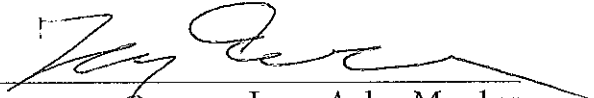
Brad Bush, President



Tim Adams, Vice President



Jim Winning, Secretary



Larry Auler, Member



Chuck Ennis, Member

Sanitary District Claims January 2, 2019

SANITARY BOND FUND

WWUTILITY / 0620-0061- Services Contractual

IUPPS Sewer Locates/November 2018 \$ 971.85

WWUTILITY / 0620-0061- Insurance General/Prop & Casualty

WWUTILITY / 0620-0061- Publication of Legal Notices

WWUTILITY / 0620-0061- Drainage Improvements

WWUTILITY / 0620-0061- Drainage Ways

Blann & Son Ditch Main/11/26/18-12/07/18 \$ 20,645.50

MAIN LIFT STATION/ SRF FUND

CHA MLS/Planning & Design \$ 508,595.64

PHOSPHORUS REMOVAL/ SRF FUND

SRF INTEREST FUND

CSO/LTCP P23

Wastewater Utility Claims

347.090 User Fees

Boyll Enterprises Of IN LLC	Refund of Credit Balance	\$580.16
Kacy Cooksey	Overpaid on Closed Account	\$43.87

421.170 Chemicals

Bio-Chem	Polymer	\$36,640.00
Evoqua	Bioxide	\$9,506.84

Personnel Services

414.020 Protective Clothing

Shoe Dept. Inc.	Safety Boots - Kevin P.	\$140.00
-----------------	-------------------------	----------

Supplies

421.010 Office Supplies

Staples	Folders, Desk Calendars	\$157.34
Staples	Printer Paper	\$209.94
Staples	Paint Markers	\$14.97
Staples	Shredder Oil, Paint Markers, Planners	\$68.64

Operating Supplies

422.005 Operational Supplies

American Welding and Gas	Propane	\$32.98
American Welding and Gas	Propane	\$32.98
Continental Research Corp	Lids for Quart Bottles	\$20.00
Erney Safe & Lock Co Inc.	Duplicate Keys	\$210.00
E-Z Clean Corp.	Paper Towels	\$118.00
Lawson Products	Paint Markers, Turbo Mixers	\$187.61
Menards	Rags, All Purpose Cleaner, Batteries	\$106.80
N.E.W. Interstate Concrete, Inc.	Hot Water, 2% High Early, Etc.	\$390.00
N.E.W. Interstate Concrete, Inc.	Hot Water	\$87.50
N.E.W. Interstate Concrete, Inc.	Hot Water, 2% High Early, Etc.	\$162.50
N.E.W. Interstate Concrete, Inc.	Hot Water	\$50.00
N.E.W. Interstate Concrete, Inc.	Hot Water, Fiber, 2% High Early	\$123.50
N.E.W. Interstate Concrete, Inc.	Hot Water	\$100.00
N.E.W. Interstate Concrete, Inc.	Hot Water, Fiber, High Early	\$85.50
N.E.W. Interstate Concrete, Inc.	Hot Water	\$80.00
Quality Automotive Dist. Co.	2032 Batteries	\$30.75
Quality Automotive Dist. Co.	Transmission Fluid	\$65.52
Sam's Club	Water	\$239.04

422.010 Gas

Automated Fuels Inc.	Gas	\$2,066.55
----------------------	-----	------------

422.020 Diesel

Automated Fuels Inc.	Diesel Fuel	\$2,520.09
----------------------	-------------	------------

Other Supplies

422.110 Boc Gas

422.160 Lab Supplies

Evoqua Water Technologies Inc.	Filters	\$843.41
NCL of Wisconsin Inc.	Glass Fiber Filters	\$65.70
USABluebook	Phosphate Reagent	\$176.67

Rep./Maint. Supplies**423.015 Maint./Rep.**

Airtex Manufacturing LLP	Shaft Bearings	\$952.23
Electrical Automation Services LLC	Timing Relay	\$132.02
Lawson Products	Screw Pins, Fittings, Etc.	\$70.11
Lawson Products	Hex Cap Screws, Washers, Fittings, Etc.	\$128.12
McCord Tire Service Inc.	New Tires	\$204.84
N.E.W. Interstate Concrete, Inc.	Limestone Air	\$1,380.00
N.E.W. Interstate Concrete, Inc.	Flowable Fill	\$1,321.25
N.E.W. Interstate Concrete, Inc.	Limestone Air	\$575.00
N.E.W. Interstate Concrete, Inc.	Flowable Fill	\$755.00
N.E.W. Interstate Concrete, Inc.	Limestone Air	\$598.00
N.E.W. Interstate Concrete, Inc.	Flowable Fill	\$1,510.00
N.E.W. Interstate Concrete, Inc.	Limestone Air	\$414.00
N.E.W. Interstate Concrete, Inc.	Flowable Fill	\$1,208.00
Quality Automotive Dist. Co.	Brake Pressure Switch Connector	\$36.79
Quality Automotive Dist. Co.	Light Socket	\$12.25
Quality Automotive Dist. Co.	Window Switch	\$107.50
Quality Automotive Dist. Co.	Brake Pads, Brake Rotors	\$73.90
Quality Automotive Dist. Co.	Disc Pad	\$41.59
Quality Automotive Dist. Co.	Seals	\$14.20
Quality Automotive Dist. Co.	Brake Rotor Hub	\$58.86
Quality Automotive Dist. Co.	Headlight Connectors	\$10.04
Quality Automotive Dist. Co.	Headlight Connectors	\$45.18
Quality Automotive Dist. Co.	Ignition Coil, Spark Plugs, Etc.	\$123.38
Quality Automotive Dist. Co.	Air Bag Clock Spring	\$132.68
Quality Automotive Dist. Co.	Gaskets	\$2.86
Quality Automotive Dist. Co.	Oil Filter	\$4.96
S & K Equipment Company Inc.	Capacitors	\$1,997.04
S & K Equipment Company Inc.	Contactors Coils	\$330.14
S & K Equipment Company Inc.	Grinding Impellers, Shredding Rings	\$2,752.60
Town & Country Ford	Wheel Assembly	\$123.77
Town & Country Ford	Wheel Assembly	\$123.77
Town & Country Ford	TPMS	\$101.18
Town & Country Ford	Wheel Covers	\$142.28
Valley Electric Supply Corp.	Wire	\$62.95
Vigo Dodge Inc	Transmission Oil Pan, Oil Pan Gasket	\$89.29
Wabash Valley Motor & Machine Inc.	Capacitors	\$114.45

Professional Services

432.010 Services Contractual

American Water Captital Corp.	Data Usage	\$6,055.00
American Water Captital Corp.	Municipality Shut Offs	\$4,745.00
Electrical Automation Services LLC	IT Services	\$16,420.00
McGuire Excavating & Trucking Inc.	Disposal Loads	\$50.00
Praxair	Finance Charges	\$6.38
Quality Automotive Dist. Co.	Computer Program Fees	\$203.00
Terminix	Pest Control	\$101.00
Vigo County Recorder's Office	Recording Liens	\$2,500.00
Wabash Design Co.	Alicia's Grant Money	\$5,000.00

432.020 Instruction

432.060 Med./Surg./Dent.

432.038 CS-Billing

TPI Billing Solutions	Printed Utility bills	\$34,206.09
TPI Billing Solutions	Printed past due notices	\$5,830.27

432.071 Lab Testing

Commonwealth Blomonitoring Inc.	Lab Testing	\$2,000.00
McCoy & McCoy Labs.	Lab Testing	\$157.00
Pace Analytical Services Inc.	Lab Testing	\$31.00

432.072 Sycamore Ridge Landfill

Sycamore Ridge Landfill	Street Sweepings	\$1,305.73
-------------------------	------------------	------------

Comm./Transportation

433.010 Telephone

Frontier	Telephone	\$261.38
----------	-----------	----------

433.020 Postage

433.040 Freight

Airtex Manufacturing LLP	Freight	\$25.00
Continental Research Corp	Freight	\$21.20
Lawson Products	Freight	\$18.94
Lawson Products	Freight	\$11.99
NCL of Wisconsin Inc.	Freight	\$11.95
S & K Equipment Company Inc.	Freight	\$8.57
S & K Equipment Company Inc.	Freight	\$6.96
USA Bluebook	Freight	\$20.10

Utility Services

436.010 Electric Utility

Duke Energy	Electric Utility	\$53,452.52
WIN Energy	Electric Utility	\$324.94

436.020 Gas Utility

436.030 Water Utility

Indiana American Water	Water Utility	\$222.94
Indiana American Water	Water Utility	\$222.94
Indiana American Water	Water Utility	\$730.49
Indiana American Water	Water Utility	\$134.98
Indiana American Water	Water Utility	\$208.90
Indiana American Water	Water Utility	\$134.23
Indiana American Water	Water Utility	\$45.09

Rep./Maint**437.010 Equipment Repair**

Jones Fabrication & Machining Inc.	Machined a Coupling	\$50.00
Wabash Valley Motor & Machine Inc.	Inspected & Repaired a Pump	\$2,303.93

437.030 Vehicle Rep./Maint.

Burke Spring & Alignment Inc.	Replaced Front Steering Lock, Etc. on a Dump Truck	\$269.59
Lambert Hauling	Installed a New Clutch, Flywheels, Etc. on a Semi	\$2,070.00

438.010 Rental of Equipment

Cahill's Rental & Sales Inc	Rented a Roto Rooter	\$45.00
-----------------------------	----------------------	---------

Machinery & Equipment**444.010 Equipment Purchase**

Christopher A. Poe Snap on Tools	Wheel Socket Extensions	\$33.50
Menards	Heaters	\$56.52
S & K Equipment Company Inc.	Grinder Pump, Start Kit	\$6,474.55

444.180 Safety Equipment

Christopher A. Poe Snap on Tools	Faceshields	\$15.50
----------------------------------	-------------	---------

445.040 Lab Equipment

CITY OF
TERRE HAUTE
DEPARTMENT
OF ENGINEERING

City Hall
17 Harding Avenue, Room 200
Terre Haute, IN 47807

Phone: 812.232.4028
Fax: 812.234.3973

www.terrehaute.IN.gov

DIKE A. BENNETT
Mayor

CHARLES W. ENNIS, P.E., S.E.
City Engineer

engineering@terrehaute.in.gov

MEMORANDUM

TO: Terre Haute Board of Sanitary Commissioners

FROM: Marcus Maurer *MEM*
Assistant City Engineer

DATE: December 28, 2018

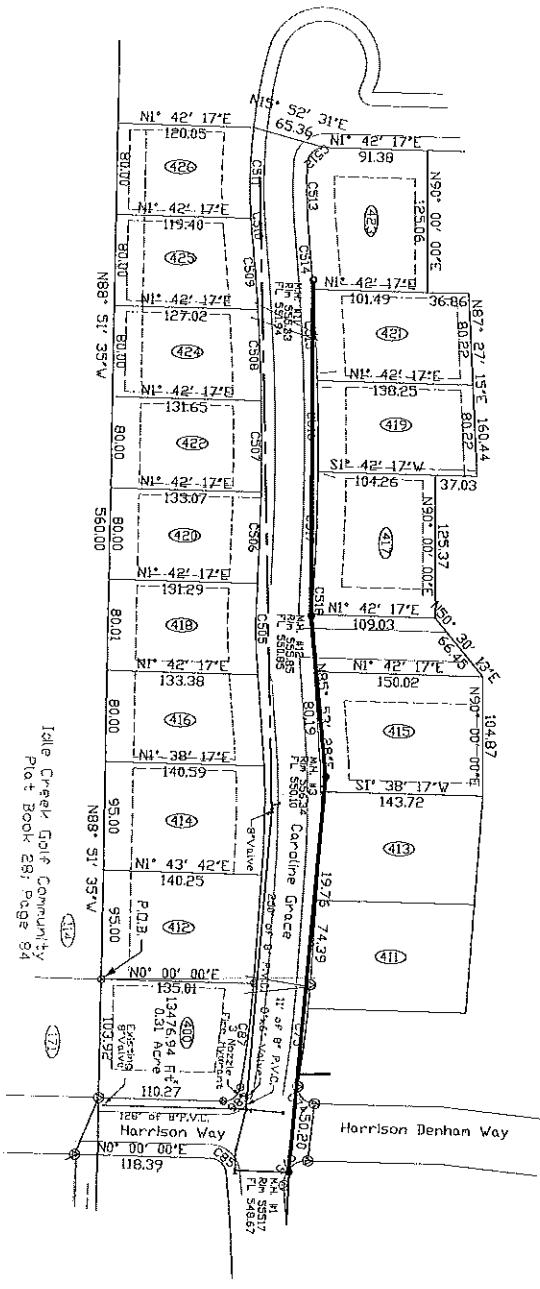
RE: **Sewer Acceptance** – Idle Creek Lots 411-426

The sanitary sewer in Idle Creek Lots 411 to 426 has been petitioned to the Sanitary District for acceptance. This sewer has been tested and inspected by the Department of Engineering with positive results. The Department of Engineering recommends acceptance of the sanitary sewer in Idle Creek Lots 411 – 426.

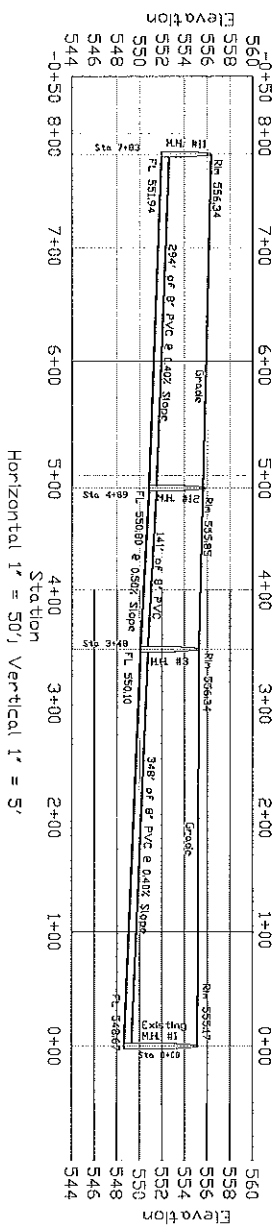
Idle Creek Lots 411 to 426 Sanitary Sewer as Built Drawings

West Line (Runs W-E) on Caroline Grace

Plan View



West Line (Runs W-E) on Caroline Grace
Profile View of Sanitary Sewer
Station



Invoices - Wastewater2

System Inv...	Vendor ID	Vendor name	Invoice nu...	Invoice date	Invoice am...	Account nu...	Account de...	Amount	Description	Line Item D...	Added by	Post date
170427 4774		AIRTEX MANI	131076	12/04/2018	\$977.23	0620-0061-0	Repair Suppl	\$952.23	WWTP - SHAFT BEARINGS AND FREIGHT		cy0021ww	12/28/2018
170427 4774		AIRTEX MANI	131076	12/04/2018	\$977.23	0620-0000-0	Accounts Pay	\$952.23	WWTP - SHAFT BEARINGS AND FREIGHT		cy0021ww	12/28/2018
170427 4774		AIRTEX MANI	131076	12/04/2018	\$977.23	0620-0061-0	Freight	\$25.00	WWTP - SHAFT BEARINGS AND FREIGHT		cy0021ww	12/28/2018
170428 3376		AMERICAN VA	06010303	12/18/2018	\$32.98	0620-0061-0	Operating Su	\$32.98	WWTP - PROPANE		cy0021ww	12/28/2018
170428 3376		AMERICAN VA	06010303	12/18/2018	\$32.98	0620-0000-0	Accounts Pay	\$32.98	WWTP - PROPANE		cy0021ww	12/28/2018
170429 4737		BIO CHEM IN	17653	01/02/2019	\$36,640.00	0620-0061-0	Chemicals	\$36,640.00	WWTP - POLYMER		cy0021ww	12/28/2018
170429 4737		BIO CHEM IN	17653	01/02/2019	\$36,640.00	0620-0000-0	Accounts Pay	\$36,640.00	WWTP - POLYMER		cy0021ww	12/28/2018
170430 10444		BURKE SPRIN	66843	12/12/2018	\$269.59	0620-0061-0	Vehicle Repair	\$269.59	WWTP - REPLACED FRONT STEERING LOC		cy0021ww	12/28/2018
170430 10444		BURKE SPRIN	66843	12/12/2018	\$269.59	0620-0000-0	Accounts Pay	\$269.59	WWTP - REPLACED FRONT STEERING LOC		cy0021ww	12/28/2018
170431 10461		CAHILL S REI	26818	12/10/2018	\$45.00	0620-0061-0	Rental Of Equ	\$45.00	WWTP - RENTAL OF ROTO ROOTER		cy0021ww	12/28/2018
170431 10461		CAHILL S REI	26818	12/10/2018	\$45.00	0620-0000-0	Accounts Pay	\$45.00	WWTP - RENTAL OF ROTO ROOTER		cy0021ww	12/28/2018
170432 12901		CHRISTOPHE	1203186131	12/03/2018	\$49.00	0620-0061-0	Purchase Of I	\$15.50	WWTP - FACE SHIELDS, WHEEL SOCKET		cy0021ww	12/28/2018
170432 12901		CHRISTOPHE	1203186131	12/03/2018	\$49.00	0620-0000-0	Accounts Pay	\$15.50	WWTP - FACE SHIELDS, WHEEL SOCKET		cy0021ww	12/28/2018
170432 12901		CHRISTOPHE	1203186131	12/03/2018	\$49.00	0620-0061-0	Purchase of E	\$33.50	WWTP - FACE SHIELDS, WHEEL SOCKET		cy0021ww	12/28/2018
170432 12901		CHRISTOPHE	1203186131	12/03/2018	\$49.00	0620-0000-0	Accounts Pay	\$33.50	WWTP - FACE SHIELDS, WHEEL SOCKET		cy0021ww	12/28/2018
170433 10651		CONTINENTA	471808-CRC-	12/11/2018	\$41.20	0620-0061-0	Operating Su	\$20.00	WWTP - LIDS FOR QUART BOTTLES AND		cy0021ww	12/28/2018
170433 10651		CONTINENTA	471808-CRC-	12/11/2018	\$41.20	0620-0000-0	Accounts Pay	\$20.00	WWTP - LIDS FOR QUART BOTTLES AND		cy0021ww	12/28/2018
170433 10651		CONTINENTA	471808-CRC-	12/11/2018	\$41.20	0620-0061-0	Freight	\$21.20	WWTP - LIDS FOR QUART BOTTLES AND		cy0021ww	12/28/2018
170433 10651		CONTINENTA	471808-CRC-	12/11/2018	\$41.20	0620-0000-0	Accounts Pay	\$21.20	WWTP - LIDS FOR QUART BOTTLES AND		cy0021ww	12/28/2018
170434 10905		ERNEY SAFE	162888	12/01/2018	\$210.00	0620-0061-0	Operating Su	\$210.00	WWTP - DUPLICATE KEYS		cy0021ww	12/28/2018
170434 10905		ERNEY SAFE	162888	12/01/2018	\$210.00	0620-0000-0	Accounts Pay	\$210.00	WWTP - DUPLICATE KEYS		cy0021ww	12/28/2018
170435 4646		EVOQUA WA	903808958	12/05/2018	\$843.41	0620-0061-0	Lab Supplies	\$843.41	WWTP - FILTERS		cy0021ww	12/28/2018
170435 4646		EVOQUA WA	903808958	12/05/2018	\$843.41	0620-0000-0	Accounts Pay	\$843.41	WWTP - FILTERS		cy0021ww	12/28/2018
170436 4646		EVOQUA WA	903819530	12/14/2018	\$9,506.84	0620-0061-0	Chemicals	\$9,506.84	WWTP - BIOXIDE		cy0021ww	12/28/2018
170436 4646		EVOQUA WA	903819530	12/14/2018	\$9,506.84	0620-0000-0	Accounts Pay	\$9,506.84	WWTP - BIOXIDE		cy0021ww	12/28/2018
170437 10920		E Z CLEAN C	IND0096189	12/18/2018	\$118.00	0620-0061-0	Operating Su	\$118.00	WWTP - PAPER TOWELS		cy0021ww	12/28/2018
170437 10920		E Z CLEAN C	IND0096189	12/18/2018	\$118.00	0620-0000-0	Accounts Pay	\$118.00	WWTP - PAPER TOWELS		cy0021ww	12/28/2018
170438 4211		JONES FABRI	10979	12/11/2018	\$50.00	0620-0061-0	Equipment Re	\$50.00	WWTP - MACHINED A COUPLING		cy0021ww	12/28/2018
170438 4211		JONES FABRI	10979	12/11/2018	\$50.00	0620-0000-0	Accounts Pay	\$50.00	WWTP - MACHINED A COUPLING		cy0021ww	12/28/2018
170439 4678		LAMBERT S I	20178	12/06/2018	\$2,070.00	0620-0061-0	Vehicle Repai	\$2,070.00	WWTP - INSTALL NEW CLUTCH/FLYWHEEL		cy0021ww	12/28/2018
170439 4678		LAMBERT S I	20178	12/06/2018	\$2,070.00	0620-0000-0	Accounts Pay	\$2,070.00	WWTP - INSTALL NEW CLUTCH/FLYWHEEL		cy0021ww	12/28/2018
170440 11703		LAWSON PR	9306327783	12/06/2018	\$276.66	0620-0061-0	Operating Su	\$187.61	WWTP - PAINT MARKERS, SCREW PINS, F		cy0021ww	12/28/2018
170440 11703		LAWSON PR	9306327783	12/06/2018	\$276.66	0620-0000-0	Accounts Pay	\$187.61	WWTP - PAINT MARKERS, SCREW PINS, F		cy0021ww	12/28/2018
170440 11703		LAWSON PR	9306327783	12/06/2018	\$276.66	0620-0000-0	Accounts Pay	\$70.11	WWTP - PAINT MARKERS, SCREW PINS, F		cy0021ww	12/28/2018
170440 11703		LAWSON PR	9306327783	12/06/2018	\$276.66	0620-0061-0	Freight	\$18.94	WWTP - PAINT MARKERS, SCREW PINS, F		cy0021ww	12/28/2018
170441 11703		LAWSON PR	9306331361	12/07/2018	\$140.11	0620-0061-0	Repair Suppl	\$128.12	WWTP - WASHERS, FITTINGS, FREIGHT		cy0021ww	12/28/2018
170441 11703		LAWSON PR	9306331361	12/07/2018	\$140.11	0620-0000-0	Accounts Pay	\$128.12	WWTP - WASHERS, FITTINGS, FREIGHT		cy0021ww	12/28/2018
170441 11703		LAWSON PR	9306331361	12/07/2018	\$140.11	0620-0000-0	Accounts Pay	\$11.99	WWTP - WASHERS, FITTINGS, FREIGHT		cy0021ww	12/28/2018
170442 11802		MCCORD TIR	320270	12/13/2018	\$204.84	0620-0061-0	Repair Suppl	\$204.84	WWTP - NEW TIRES		cy0021ww	12/28/2018
170442 11802		MCCORD TIR	320270	12/13/2018	\$204.84	0620-0000-0	Accounts Pay	\$204.84	WWTP - NEW TIRES		cy0021ww	12/28/2018
170443 1784		MCCOY & MC	1376382	12/21/2018	\$157.00	0620-0061-0	Lab Testing	\$157.00	WWTP - LAB TESTING		cy0021ww	12/28/2018
170443 1784		MCCOY & MC	1376382	12/21/2018	\$157.00	0620-0000-0	Accounts Pay	\$157.00	WWTP - LAB TESTING		cy0021ww	12/28/2018
170444 11807		MCGUIRE EXI	14942	12/17/2018	\$50.00	0620-0061-0	Services Cont	\$50.00	WWTP - DISPOSAL LOADS		cy0021ww	12/28/2018
170444 11807		MCGUIRE EXI	14942	12/17/2018	\$50.00	0620-0000-0	Accounts Pay	\$50.00	WWTP - DISPOSAL LOADS		cy0021ww	12/28/2018
170444 11807		MCGUIRE EXI	14942	12/17/2018	\$50.00	0620-0000-0	Accounts Pay	\$50.00	WWTP - DISPOSAL LOADS		cy0021ww	12/28/2018

John A. ...

Paul ...

...

Invoices - Wastewater2

System Inv...	Vendor ID	Vendor name	Invoice nu...	Invoice date	Invoice am...	Account nu...	Account de...	Amount	Description	Line Item D...	Added by	Post date
170445 12047		N.E.W. INTEI 101874	12/07/2018	\$1,770.00	0620-0061-0: Repair Suppl		\$1,380.00	WWTP - LIMESTONE AIR, HOT WATER		cy/0021ww	12/28/2018	
170445 12047		N.E.W. INTEI 101874	12/07/2018	\$1,770.00	0620-0000-0: Accounts Pay		\$1,380.00	WWTP - LIMESTONE AIR, HOT WATER		cy/0021ww	12/28/2018	
170445 12047		N.E.W. INTEI 101874	12/07/2018	\$1,770.00	0620-0061-0: Operating Su		\$390.00	WWTP - LIMESTONE AIR, HOT WATER		cy/0021ww	12/28/2018	
170445 12047		N.E.W. INTEI 101874	12/07/2018	\$1,770.00	0620-0000-0: Accounts Pay		\$390.00	WWTP - LIMESTONE AIR, HOT WATER		cy/0021ww	12/28/2018	
170446 12047		N.E.W. INTEI 101901	12/11/2018	\$1,408.75	0620-0061-0: Repair Suppl		\$1,321.25	WWTP - FLOWABLE FILL, HOT WATER		cy/0021ww	12/28/2018	
170446 12047		N.E.W. INTEI 101901	12/11/2018	\$1,408.75	0620-0000-0: Accounts Pay		\$1,321.25	WWTP - FLOWABLE FILL, HOT WATER		cy/0021ww	12/28/2018	
170446 12047		N.E.W. INTEI 101901	12/11/2018	\$1,408.75	0620-0061-0: Operating Su		\$87.50	WWTP - FLOWABLE FILL, HOT WATER		cy/0021ww	12/28/2018	
170446 12047		N.E.W. INTEI 101901	12/11/2018	\$1,408.75	0620-0000-0: Accounts Pay		\$87.50	WWTP - FLOWABLE FILL, HOT WATER		cy/0021ww	12/28/2018	
170447 12047		N.E.W. INTEI 101902	12/11/2018	\$737.50	0620-0061-0: Repair Suppl		\$575.00	WWTP - LIMESTONE AIR, HOT WATER		cy/0021ww	12/28/2018	
170447 12047		N.E.W. INTEI 101902	12/11/2018	\$737.50	0620-0000-0: Accounts Pay		\$575.00	WWTP - LIMESTONE AIR, HOT WATER		cy/0021ww	12/28/2018	
170447 12047		N.E.W. INTEI 101902	12/11/2018	\$737.50	0620-0061-0: Operating Su		\$162.50	WWTP - LIMESTONE AIR, HOT WATER		cy/0021ww	12/28/2018	
170447 12047		N.E.W. INTEI 101902	12/11/2018	\$737.50	0620-0000-0: Accounts Pay		\$162.50	WWTP - LIMESTONE AIR, HOT WATER		cy/0021ww	12/28/2018	
170448 12047		N.E.W. INTEI 101936	12/12/2018	\$805.00	0620-0061-0: Repair Suppl		\$755.00	WWTP - FLOWABLE FILL, HOT WATER		cy/0021ww	12/28/2018	
170448 12047		N.E.W. INTEI 101936	12/12/2018	\$805.00	0620-0000-0: Accounts Pay		\$755.00	WWTP - FLOWABLE FILL, HOT WATER		cy/0021ww	12/28/2018	
170448 12047		N.E.W. INTEI 101936	12/12/2018	\$805.00	0620-0061-0: Operating Su		\$50.00	WWTP - FLOWABLE FILL, HOT WATER		cy/0021ww	12/28/2018	
170448 12047		N.E.W. INTEI 101936	12/12/2018	\$805.00	0620-0000-0: Accounts Pay		\$50.00	WWTP - FLOWABLE FILL, HOT WATER		cy/0021ww	12/28/2018	
170449 12047		N.E.W. INTEI 101945	12/13/2018	\$721.50	0620-0061-0: Repair Suppl		\$598.00	WWTP - LIMESTONE AIR, HOT WATER		cy/0021ww	12/28/2018	
170449 12047		N.E.W. INTEI 101945	12/13/2018	\$721.50	0620-0000-0: Accounts Pay		\$598.00	WWTP - LIMESTONE AIR, HOT WATER		cy/0021ww	12/28/2018	
170449 12047		N.E.W. INTEI 101945	12/13/2018	\$721.50	0620-0061-0: Operating Su		\$123.50	WWTP - LIMESTONE AIR, HOT WATER		cy/0021ww	12/28/2018	
170449 12047		N.E.W. INTEI 101945	12/13/2018	\$721.50	0620-0000-0: Accounts Pay		\$123.50	WWTP - LIMESTONE AIR, HOT WATER		cy/0021ww	12/28/2018	
170450 12047		N.E.W. INTEI 101959	12/17/2018	\$1,610.00	0620-0061-0: Repair Suppl		\$1,510.00	WWTP - FLOWABLE FILL, HOT WATER		cy/0021ww	12/28/2018	
170450 12047		N.E.W. INTEI 101959	12/17/2018	\$1,610.00	0620-0000-0: Accounts Pay		\$1,510.00	WWTP - FLOWABLE FILL, HOT WATER		cy/0021ww	12/28/2018	
170450 12047		N.E.W. INTEI 101959	12/17/2018	\$1,610.00	0620-0061-0: Operating Su		\$100.00	WWTP - FLOWABLE FILL, HOT WATER		cy/0021ww	12/28/2018	
170450 12047		N.E.W. INTEI 101959	12/17/2018	\$1,610.00	0620-0000-0: Accounts Pay		\$100.00	WWTP - FLOWABLE FILL, HOT WATER		cy/0021ww	12/28/2018	
170451 12047		N.E.W. INTEI 101968	12/18/2018	\$499.50	0620-0061-0: Repair Suppl		\$414.00	WWTP - LIMESTONE AIR, HOT WATER		cy/0021ww	12/28/2018	
170451 12047		N.E.W. INTEI 101968	12/18/2018	\$499.50	0620-0000-0: Accounts Pay		\$414.00	WWTP - LIMESTONE AIR, HOT WATER		cy/0021ww	12/28/2018	
170451 12047		N.E.W. INTEI 101968	12/18/2018	\$499.50	0620-0061-0: Operating Su		\$85.50	WWTP - LIMESTONE AIR, HOT WATER		cy/0021ww	12/28/2018	
170451 12047		N.E.W. INTEI 101968	12/18/2018	\$499.50	0620-0000-0: Accounts Pay		\$85.50	WWTP - LIMESTONE AIR, HOT WATER		cy/0021ww	12/28/2018	
170451 12047		N.E.W. INTEI 101968	12/18/2018	\$1,288.00	0620-0061-0: Repair Suppl		\$1,208.00	WWTP - FLOWABLE FILL, HOT WATER		cy/0021ww	12/28/2018	
170451 12047		N.E.W. INTEI 101968	12/18/2018	\$1,288.00	0620-0000-0: Accounts Pay		\$1,208.00	WWTP - FLOWABLE FILL, HOT WATER		cy/0021ww	12/28/2018	
170452 12047		N.E.W. INTEI 101990	12/18/2018	\$1,288.00	0620-0061-0: Operating Su		\$80.00	WWTP - FLOWABLE FILL, HOT WATER		cy/0021ww	12/28/2018	
170452 12047		N.E.W. INTEI 101990	12/18/2018	\$1,288.00	0620-0000-0: Accounts Pay		\$80.00	WWTP - FLOWABLE FILL, HOT WATER		cy/0021ww	12/28/2018	
170452 12047		N.E.W. INTEI 101990	12/18/2018	\$1,288.00	0620-0061-0: Operating Su		\$80.00	WWTP - FLOWABLE FILL, HOT WATER		cy/0021ww	12/28/2018	
170452 12047		N.E.W. INTEI 101990	12/18/2018	\$1,288.00	0620-0000-0: Accounts Pay		\$80.00	WWTP - FLOWABLE FILL, HOT WATER		cy/0021ww	12/28/2018	
170453 12034		N.C.L. OF WI 416706	12/18/2018	\$77.65	0620-0061-0: Lab Supplies		\$65.70	WWTP - GLASS FIBER FILTERS AND FREI		cy/0021ww	12/28/2018	
170453 12034		N.C.L. OF WI 416706	12/18/2018	\$77.65	0620-0000-0: Accounts Pay		\$65.70	WWTP - GLASS FIBER FILTERS AND FREI		cy/0021ww	12/28/2018	
170453 12034		N.C.L. OF WI 416706	12/18/2018	\$77.65	0620-0061-0: Freight		\$11.95	WWTP - GLASS FIBER FILTERS AND FREI		cy/0021ww	12/28/2018	
170453 12034		N.C.L. OF WI 416706	12/18/2018	\$77.65	0620-0000-0: Accounts Pay		\$11.95	WWTP - GLASS FIBER FILTERS AND FREI		cy/0021ww	12/28/2018	
170454 4537		PAGE ANALY_ 1850100622	12/17/2018	\$31.00	0620-0061-0: Lab Testing		\$31.00	WWTP - LAB TESTING		cy/0021ww	12/28/2018	
170454 4537		PAGE ANALY_ 1850100622	12/17/2018	\$31.00	0620-0000-0: Accounts Pay		\$31.00	WWTP - LAB TESTING		cy/0021ww	12/28/2018	
170455 12279		PAYXAIR DIS 86451016	12/03/2018	\$6.38	0620-0061-0: Services Cont		\$6.38	WWTP - FINANCE CHARGES		cy/0021ww	12/28/2018	
170455 12279		PAYXAIR DIS 86451016	12/03/2018	\$6.38	0620-0000-0: Accounts Pay		\$6.38	WWTP - FINANCE CHARGES		cy/0021ww	12/28/2018	
170456 12355		QUALITY AUT 066518	12/12/2018	\$36.79	0620-0061-0: Repair Suppl		\$36.79	WWTP - BRAKE PRESS. SWITCH CONNECT		cy/0021ww	12/28/2018	
170456 12355		QUALITY AUT 066518	12/12/2018	\$36.79	0620-0000-0: Accounts Pay		\$36.79	WWTP - BRAKE PRESS. SWITCH CONNECT		cy/0021ww	12/28/2018	
170456 12355		QUALITY AUT 066557	12/13/2018	\$12.25	0620-0061-0: Repair Suppl		\$12.25	WWTP - LIGHT SOCKET		cy/0021ww	12/28/2018	
170456 12355		QUALITY AUT 066557	12/13/2018	\$12.25	0620-0000-0: Accounts Pay		\$12.25	WWTP - LIGHT SOCKET		cy/0021ww	12/28/2018	
170457 12355		QUALITY AUT 066557	12/13/2018	\$12.25	0620-0061-0: Repair Suppl		\$107.50	WWTP - WINDOW SWITCH		cy/0021ww	12/28/2018	
170457 12355		QUALITY AUT 066557	12/13/2018	\$12.25	0620-0000-0: Accounts Pay		\$107.50	WWTP - WINDOW SWITCH		cy/0021ww	12/28/2018	
170458 12355		QUALITY AUT 066563	12/13/2018	\$107.50	0620-0000-0: Accounts Pay		\$73.90	WWTP - BRAKE PADS/ROTORS		cy/0021ww	12/28/2018	
170458 12355		QUALITY AUT 066563	12/13/2018	\$107.50	0620-0061-0: Repair Suppl		\$73.90	WWTP - BRAKE PADS/ROTORS		cy/0021ww	12/28/2018	
170459 12355		QUALITY AUT 066574	12/13/2018	\$73.90	0620-0000-0: Accounts Pay		\$73.90	WWTP - BRAKE PADS/ROTORS		cy/0021ww	12/28/2018	
170459 12355		QUALITY AUT 066574	12/13/2018	\$73.90	0620-0061-0: Repair Suppl		\$73.90	WWTP - BRAKE PADS/ROTORS		cy/0021ww	12/28/2018	

Invoices - Wastewater2

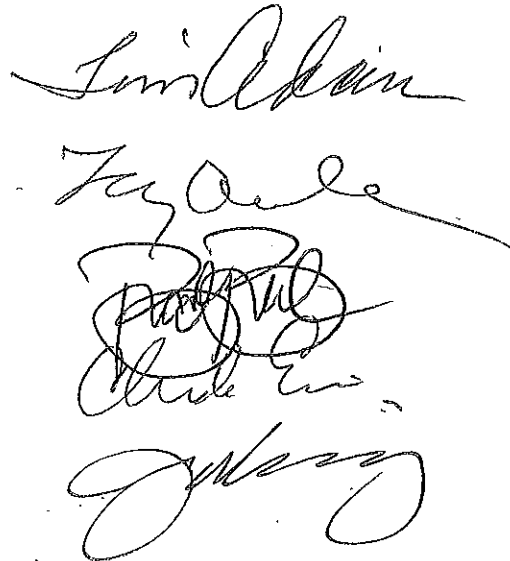
System inv...	Vendor ID	Vendor name	Invoice nu...	Invoice date	Invoice am...	Account nu...	Account de...	Amount	Description	Line Item D...	Added by	Post date
170461 12355		QUALITY AU	066613	12/13/2018	\$14.20	0620-0061-0	Repair Suppl	\$14.20	WWTP - SEALS		cb\0021ww	12/28/2018
170461 12355		QUALITY AU	066613	12/13/2018	\$14.20	0620-0000-0	Accounts Pay	\$14.20	WWTP - SEALS		cb\0021ww	12/28/2018
170462 12355		QUALITY AU	066622	12/13/2018	\$58.86	0620-0061-0	Repair Suppl	\$58.86	WWTP - BRAKE ROTOR HUBS		cb\0021ww	12/28/2018
170462 12355		QUALITY AU	066622	12/13/2018	\$58.86	0620-0000-0	Accounts Pay	\$58.86	WWTP - BRAKE ROTOR HUBS		cb\0021ww	12/28/2018
170463 12355		QUALITY AU	066648	12/13/2018	\$10.04	0620-0061-0	Repair Suppl	\$10.04	WWTP - HEADLIGHT CONNECTORS		cb\0021ww	12/28/2018
170463 12355		QUALITY AU	066648	12/13/2018	\$10.04	0620-0000-0	Accounts Pay	\$10.04	WWTP - HEADLIGHT CONNECTORS		cb\0021ww	12/28/2018
170464 12355		QUALITY AU	066901	12/17/2018	\$45.18	0620-0061-0	Repair Suppl	\$45.18	WWTP - HEADLIGHT CONNECTORS		cb\0021ww	12/28/2018
170464 12355		QUALITY AU	066901	12/17/2018	\$45.18	0620-0000-0	Accounts Pay	\$45.18	WWTP - HEADLIGHT CONNECTORS		cb\0021ww	12/28/2018
170465 12355		QUALITY AU	067069	12/18/2018	\$30.75	0620-0061-0	Operating Su	\$30.75	WWTP - 2032 BATTERIES		cb\0021ww	12/28/2018
170465 12355		QUALITY AU	067069	12/18/2018	\$30.75	0620-0000-0	Accounts Pay	\$30.75	WWTP - 2032 BATTERIES		cb\0021ww	12/28/2018
170466 12355		QUALITY AU	067137	12/17/2018	\$123.38	0620-0061-0	Repair Suppl	\$123.38	WWTP - IGNITION COIL, SPARK PLUGS		cb\0021ww	12/28/2018
170466 12355		QUALITY AU	067137	12/17/2018	\$123.38	0620-0000-0	Accounts Pay	\$123.38	WWTP - IGNITION COIL, SPARK PLUGS		cb\0021ww	12/28/2018
170467 12355		QUALITY AU	067283	12/19/2018	\$132.68	0620-0061-0	Repair Suppl	\$132.68	WWTP - AIR BAG CLOCK SPRING		cb\0021ww	12/28/2018
170467 12355		QUALITY AU	067283	12/19/2018	\$132.68	0620-0000-0	Accounts Pay	\$132.68	WWTP - AIR BAG CLOCK SPRING		cb\0021ww	12/28/2018
170468 12355		QUALITY AU	067289	12/19/2018	\$2.86	0620-0061-0	Repair Suppl	\$2.86	WWTP - GASKETS		cb\0021ww	12/28/2018
170468 12355		QUALITY AU	067289	12/19/2018	\$2.86	0620-0000-0	Accounts Pay	\$2.86	WWTP - GASKETS		cb\0021ww	12/28/2018
170469 12355		QUALITY AU	067291	12/19/2018	\$65.52	0620-0061-0	Operating Su	\$65.52	WWTP - TRANSMISSION FLUID		cb\0021ww	12/28/2018
170469 12355		QUALITY AU	067291	12/19/2018	\$65.52	0620-0000-0	Accounts Pay	\$65.52	WWTP - TRANSMISSION FLUID		cb\0021ww	12/28/2018
170470 12355		QUALITY AU	967364	12/20/2018	\$203.00	0620-0061-0	Services Conl	\$203.00	WWTP - COMPUTER PROGRAM FEES		cb\0021ww	12/28/2018
170470 12355		QUALITY AU	967364	12/20/2018	\$203.00	0620-0000-0	Accounts Pay	\$203.00	WWTP - COMPUTER PROGRAM FEES		cb\0021ww	12/28/2018
170471 12355		QUALITY AU	067764	12/26/2018	\$4.96	0620-0061-0	Repair Suppl	\$4.96	WWTP - OIL FILTER		cb\0021ww	12/28/2018
170471 12355		QUALITY AU	067764	12/26/2018	\$4.96	0620-0000-0	Accounts Pay	\$4.96	WWTP - OIL FILTER		cb\0021ww	12/28/2018
170472 3895		SHOE DEPT.	30012	12/06/2018	\$140.00	0620-0061-0	Protective Clc	\$140.00	WWTP - SAFETY BOOTS - KEVIN POWERS		cb\0021ww	12/28/2018
170472 3895		SHOE DEPT.	30012	12/06/2018	\$140.00	0620-0000-0	Accounts Pay	\$140.00	WWTP - SAFETY BOOTS - KEVIN POWERS		cb\0021ww	12/28/2018
170473 623		S & K EQUIP	7866	12/12/2018	\$2,005.61	0620-0061-0	Repair Suppl	\$1,997.04	WWTP - CAPTORS, FREIGHT		cb\0021ww	12/28/2018
170473 623		S & K EQUIP	7866	12/12/2018	\$2,005.61	0620-0000-0	Accounts Pay	\$1,997.04	WWTP - CAPTORS, FREIGHT		cb\0021ww	12/28/2018
170473 623		S & K EQUIP	7866	12/12/2018	\$2,005.61	0620-0061-0	Freight	\$8.57	WWTP - CAPTORS, FREIGHT		cb\0021ww	12/28/2018
170473 623		S & K EQUIP	7866	12/12/2018	\$2,005.61	0620-0000-0	Accounts Pay	\$8.57	WWTP - CAPTORS, FREIGHT		cb\0021ww	12/28/2018
170474 623		S & K EQUIP	7870	12/13/2018	\$337.10	0620-0061-0	Repair Suppl	\$330.14	WWTP - CONTRACTOR COILS, FREIGHT		cb\0021ww	12/28/2018
170474 623		S & K EQUIP	7870	12/13/2018	\$337.10	0620-0000-0	Accounts Pay	\$330.14	WWTP - CONTRACTOR COILS, FREIGHT		cb\0021ww	12/28/2018
170474 623		S & K EQUIP	7870	12/13/2018	\$337.10	0620-0061-0	Freight	\$6.96	WWTP - CONTRACTOR COILS, FREIGHT		cb\0021ww	12/28/2018
170474 623		S & K EQUIP	7870	12/13/2018	\$337.10	0620-0000-0	Accounts Pay	\$6.96	WWTP - CONTRACTOR COILS, FREIGHT		cb\0021ww	12/28/2018
170474 623		S & K EQUIP	7870	12/13/2018	\$6,474.55	0620-0061-0	Purchase of E	\$6,474.55	WWTP - GRINDER PUMP, START KIT		cb\0021ww	12/28/2018
170474 623		S & K EQUIP	7873	12/15/2018	\$6,474.55	0620-0000-0	Accounts Pay	\$6,474.55	WWTP - GRINDER PUMP, START KIT		cb\0021ww	12/28/2018
170475 623		S & K EQUIP	7873	12/15/2018	\$2,752.60	0620-0061-0	Repair Suppl	\$2,752.60	WWTP - GRINDING IMPELLERS, SHREDDI		cb\0021ww	12/28/2018
170475 623		S & K EQUIP	7874	12/15/2018	\$2,752.60	0620-0000-0	Accounts Pay	\$2,752.60	WWTP - GRINDING IMPELLERS, SHREDDI		cb\0021ww	12/28/2018
170476 623		S & K EQUIP	7874	12/15/2018	\$123.77	0620-0061-0	Repair Suppl	\$123.77	WWTP - WHEEL ASSEMBLY		cb\0021ww	12/28/2018
170476 623		S & K EQUIP	7874	12/15/2018	\$123.77	0620-0000-0	Accounts Pay	\$123.77	WWTP - WHEEL ASSEMBLY		cb\0021ww	12/28/2018
170477 12748		TOWN & COL	608214	12/18/2018	\$142.28	0620-0061-0	Repair Suppl	\$142.28	WWTP - WHEEL COVERS		cb\0021ww	12/28/2018
170477 12748		TOWN & COL	608214	12/18/2018	\$142.28	0620-0000-0	Accounts Pay	\$142.28	WWTP - WHEEL COVERS		cb\0021ww	12/28/2018
170478 12748		TOWN & COL	608318	12/19/2018	\$123.77	0620-0061-0	Repair Suppl	\$123.77	WWTP - WHEEL ASSEMBLY		cb\0021ww	12/28/2018
170478 12748		TOWN & COL	608318	12/19/2018	\$123.77	0620-0000-0	Accounts Pay	\$123.77	WWTP - WHEEL ASSEMBLY		cb\0021ww	12/28/2018
170478 12748		TOWN & COL	608319	12/19/2018	\$101.18	0620-0061-0	Repair Suppl	\$101.18	WWTP - TPMS		cb\0021ww	12/28/2018
170478 12748		TOWN & COL	608319	12/19/2018	\$101.18	0620-0000-0	Accounts Pay	\$101.18	WWTP - TPMS		cb\0021ww	12/28/2018
170479 12748		TOWN & COL	608319	12/19/2018	\$142.28	0620-0061-0	Repair Suppl	\$142.28	WWTP - WHEEL ASSEMBLY		cb\0021ww	12/28/2018
170479 12748		TOWN & COL	608319	12/19/2018	\$142.28	0620-0000-0	Accounts Pay	\$142.28	WWTP - WHEEL ASSEMBLY		cb\0021ww	12/28/2018
170480 12748		TOWN & COL	608582	12/21/2018	\$176.67	0620-0061-0	Lab Supplies	\$176.67	WWTP - PHOSPHATE REAGENT, FREIGHT		cb\0021ww	12/28/2018
170480 12748		TOWN & COL	608582	12/21/2018	\$176.67	0620-0000-0	Accounts Pay	\$176.67	WWTP - PHOSPHATE REAGENT, FREIGHT		cb\0021ww	12/28/2018
170481 3498		USABLUUBOC	763076	12/14/2018	\$196.77	0620-0061-0	Accounts Pay	\$196.77	WWTP - PHOSPHATE REAGENT, FREIGHT		cb\0021ww	12/28/2018
170481 3498		USABLUUBOC	763076	12/14/2018	\$196.77	0620-0000-0	Accounts Pay	\$196.77	WWTP - PHOSPHATE REAGENT, FREIGHT		cb\0021ww	12/28/2018
170481 3498		USABLUUBOC	763076	12/14/2018	\$20.10	0620-0061-0	Freight	\$20.10	WWTP - PHOSPHATE REAGENT, FREIGHT		cb\0021ww	12/28/2018
170481 3498		USABLUUBOC	763076	12/14/2018	\$20.10	0620-0000-0	Accounts Pay	\$20.10	WWTP - PHOSPHATE REAGENT, FREIGHT		cb\0021ww	12/28/2018

Invoices - Wastewater2

/stem inv...	Vendor ID	Vendor name	Invoice nu...	Invoice date	Invoice am...	Account nu...	Account de...	Amount	Description	Line Item D...	Added by	Post date
170482 12987		VALLEY ELEC	\$5934626.00	12/14/2018	\$62.95	0620-0061-0	Repair Suppl	\$62.95	WWTP - WIRE		cy/0021ww	12/28/2018
170482 12987		VALLEY ELEC	\$5934626.00	12/14/2018	\$62.95	0620-0000-0	Accounts Pay	\$62.95	WWTP - WIRE		cy/0021ww	12/28/2018
170483 13123		VIGO DODGE	20284	12/17/2018	\$89.29	0620-0061-0	Repair Suppl	\$89.29	WWTP - TRANSMISSION OIL, PAN OIL, PA		cy/0021ww	12/28/2018
170483 13123		VIGO DODGE	20284	12/17/2018	\$89.29	0620-0000-0	Accounts Pay	\$89.29	WWTP - TRANSMISSION OIL, PAN OIL, PA		cy/0021ww	12/28/2018
170484 1399		WABASH VAL	15583	12/18/2018	\$2,303.93	0620-0061-0	Equipment Re	\$2,303.93	WWTP - INSPECTED & REPAIRED A PUMP		cy/0021ww	12/28/2018
170484 1399		WABASH VAL	15583	12/18/2018	\$2,303.93	0620-0000-0	Accounts Pay	\$2,303.93	WWTP - INSPECTED & REPAIRED A PUMP		cy/0021ww	12/28/2018
170485 1399		WABASH VAL	20019w	12/19/2018	\$114.45	0620-0061-0	Repair Suppl	\$114.45	WWTP - CAPACTORS		cy/0021ww	12/28/2018
170485 1399		WABASH VAL	20019w	12/19/2018	\$114.45	0620-0000-0	Accounts Pay	\$114.45	WWTP - CAPACTORS		cy/0021ww	12/28/2018

Jnl	Description / Addnl data items	Ref 1	Ref 2	Ref 3	Rate / Resrce	Units	Amount / Rate	Posted amount
EN	IN AMERICAN WATER COMPANY A0620-0000-00-202.010	228126	11331					222.94CR
EN	IN AMERICAN WATER COMPANY A0620-0061-03-436.030	228126	11331					222.94
EN	IN AMERICAN WATER COMPANY A0620-0000-00-202.010	228127	11331					222.94CR
EN	IN AMERICAN WATER COMPANY A0620-0061-03-436.030	228127	11331					222.94
EN	SAM'S CLUB A0620-0000-00-202.010	228128	12662					239.04CR
EN	SAM'S CLUB A0620-0061-02-422.005	228128	12662					239.04

Batch 172872 posted on 12/19/18 by 42 for business date 12/19/18



Four handwritten signatures in cursive script, stacked vertically. The signatures are: 1. Louis Adair, 2. Frye, 3. [unclear], 4. [unclear].

Run date: 12/19/2018 @ 09:23
Bus date: 12/19/2018

City of Terre Haute
*** Journal entry trace ***

CS72872.L02 Page 2

Jnl	Period	Account	Description	Debit	Credit	Balance
EN		Encumbrance Journal				
	12 2018	A0620-0000-00-202.010	ACCOUNTS PAYABLE		684.92	
	12 2018	A0620-0061-02-422.005	OPERATING SUPPLIES	239.04		
	12 2018	A0620-0061-03-436.030	WATER UTILITY	445.88		
		Total for Financial System		684.92	684.92	.00

Batch 172872 posted on 12/19/18 by 42 for business date 12/19/18

Run date: 12/18/2018 @ 15:19
Bus date: 12/18/2018

City of Terre Haute
* * * Journal entry trace * * *

CS72856.L02 Page 1

Jnl	Description / Addnl data items	Ref 1	Ref 2	Ref 3	Rate / Resrce	Units	Amount / Rate	Posted amount
EN	VIGO COUNTY RECORDER A0620-0000-00-202.010	228107	13109					2,500.00CR
EN	VIGO COUNTY RECORDER A0620-0061-03-432.010	228107	13109					2,500.00

Batch 172856 posted on 12/18/18 by 42 for business date 12/18/18

Jim Adams
[Signature]
[Signature]
[Signature]

Run date: 12/18/2018 @ 15:19
Bus date: 12/18/2018

City of Terre Haute
*** Journal entry trace ***

CS72856.L02 Page 2

Jnl	Period	Account	Description	Debit	Credit	Balance
EN		Encumbrance Journal				
	12 2018	A0620-0000-00-202.010	ACCOUNTS PAYABLE		2,500.00	
	12 2018	A0620-0061-03-432.010	SERVICES CONTRACTUAL	2,500.00		
		Total for Financial System		2,500.00	2,500.00	.00

Batch 172856 posted on 12/18/18 by 42 for business date 12/18/18

Jnl	Description / Addnl data items	Ref 1	Ref 2	Ref 3	Rate / Resrce	Units	Amount / Rate	Posted amount
EN	ELECTRICAL AUTOMATION SERVICES A0620-0000-00-202.010	228115	2915					132.02CR
EN	ELECTRICAL AUTOMATION SERVICES A0620-0061-02-423.015	228115	2915					132.02
EN	ELECTRICAL AUTOMATION SERVICES A0620-0000-00-202.010	228116	2915					16,420.00CR
EN	ELECTRICAL AUTOMATION SERVICES A0620-0061-03-432.010	228116	2915					16,420.00
EN	WIN ENERGY REMC A0620-0000-00-202.010	228117	13281					324.94CR
EN	WIN ENERGY REMC A0620-0061-03-436.010	228117	13281					324.94
EN	DUKE ENERGY A0620-0000-00-202.010	228118	10540					53,452.52CR
EN	DUKE ENERGY A0620-0061-03-436.010	228118	10540					53,452.52
EN	AMERICAN WATER CAPITAL CORP. A0620-0000-00-202.010	228119	15					6,055.00CR
EN	AMERICAN WATER CAPITAL CORP. A0620-0061-03-432.010	228119	15					6,055.00
EN	AUTOMATED FUELS, INC. A0620-0000-00-202.010	228120	10262					4,586.64CR
EN	AUTOMATED FUELS, INC. A0620-0061-02-422.010	228120	10262					2,066.55
EN	AUTOMATED FUELS, INC. A0620-0061-02-422.020	228120	10262					2,520.09
EN	COMMONWEALTH BIOMONITORING, IN A0620-0000-00-202.010	228121	10616					2,000.00CR
EN	COMMONWEALTH BIOMONITORING, IN A0620-0061-03-432.071	228121	10616					2,000.00

Batch 172860 posted on 12/18/18 by 42 for business date 12/18/18



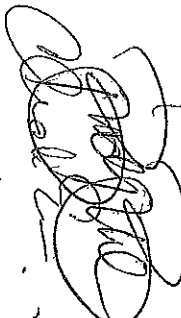

Tom Adams
Tyger
[Signature]
[Signature]

Jnl	Period	Account	Description	Debit	Credit	Balance
EN		Encumbrance Journal				
	12 2018	A0620-0000-00-202.010	ACCOUNTS PAYABLE		82,971.12	
	12 2018	A0620-0061-02-422.010	GASOLINE	2,066.55		
	12 2018	A0620-0061-02-422.020	DIESEL FUEL	2,520.09		
	12 2018	A0620-0061-02-423.015	REPAIR SUPPLIES	132.02		
	12 2018	A0620-0061-03-432.010	SERVICES CONTRACTUAL	22,475.00		
	12 2018	A0620-0061-03-432.071	LAB TESTING	2,000.00		
	12 2018	A0620-0061-03-436.010	ELECTRIC UTILITY	53,777.46		
		Total for Financial System		82,971.12	82,971.12	.00

Batch 172860 posted on 12/18/18 by 42 for business date 12/18/18

Invoices - Wastewater2

System Inv...	Vendor ID	Vendor name	Invoice nu...	Invoice date	Invoice am...	Account nu...	Account de...	Amount	Description	Line Item D...	Added by	Post date
170486 12355		QUALITY AUF	066612	12/13/2018	\$41.59	0620-0061-01	Repair Suppl	\$41.59	WWTP - DISC PAD		cty0021ww	12/29/2018
170486 12355		QUALITY AUF	066612	12/13/2018	\$41.59	0620-0000-01	Accounts Pay	\$41.59	WWTP - DISC PAD		cty0021ww	12/29/2018

System invo...	Vendor ID	Vendor name	Invoice num...	Invoice date	Invoice amo...	Account nu...	Account des...	Amount	Added by	Post date
170487	3460	IUPPS INC.		12/26/2018	\$971.85	0620-0061-03	Services Conti	\$971.85	cty0019eng	01/02/2019
170487	3460	IUPPS INC.		12/26/2018	\$971.85	0620-0000-0C	Accounts Paya	\$971.85	cty0019eng	01/02/2019
170488	3729	BLANN & SON 5091		12/13/2018	\$20,645.50	0620-0061-03	Drainage Way	\$20,645.50	cty0019eng	01/02/2019
170488	3729	BLANN & SON 5091		12/13/2018	\$20,645.50	0620-0000-0C	Accounts Paye	\$20,645.50	cty0019eng	01/02/2019

Jim Adam

Lee Bell

Bob King

John King